

Adapters for tubular motors

To be defined according to type of roller present on the system

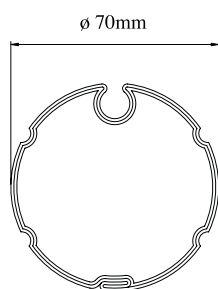


- The package includes:
- drive crown gear for winding roller
 - drive crown gear for travel-limit stop group

Type of roller present on system.	Adapter
<p>ø 52 mm</p>	<p>Adapter for octagonal tube 52</p> <p>Code 132211</p>
<p>ø 60mm</p>	<p>Adapter for octagonal tube 60</p> <p>Code 132200</p>
<p>ø 70mm</p>	<p>Adapter for octagonal tube 70</p> <p>Code 132201</p>

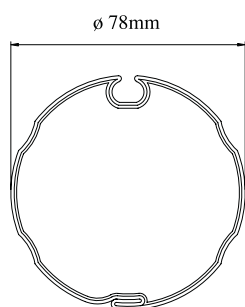
Type of roller present on system.

Adapter



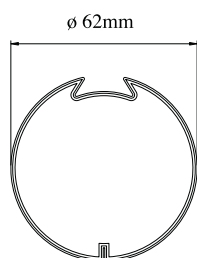
Adapter for
ogive tube 70

Code 132202



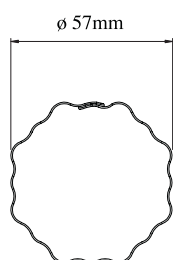
Adapter for
ogive tube 78

Code 132203



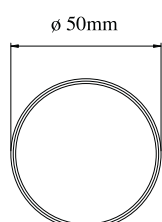
Adapter for
deprat tube 62

Code 132208



Adapter for
gaviota bonfanti tube 57

Code 132209



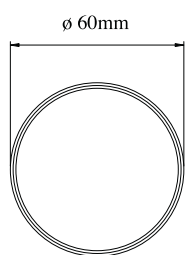
Adapter for
round tube 50

Code 132213



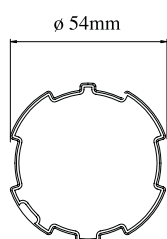
Type of roller present on system.

Adapter



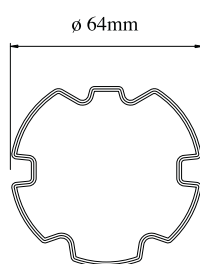
Adapter for
round tube 60

Code 132214



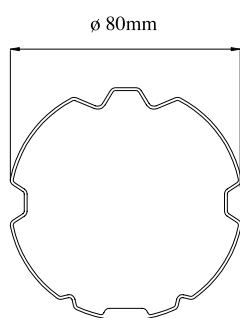
Adapter for
zf tube 54

Code 132215



Adapter for
zf tube 64

Code 132216



Adapter for
zf tube 80

Code 132217



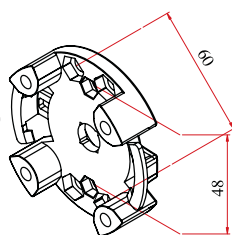
Supports for tubular motors TM45 - TM45R - TM45W

To be defined according
to type of installation.



Support
standard (6 holes for M5 screws)

Code 132300



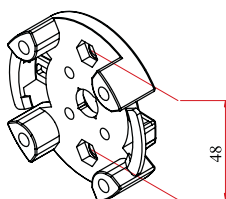
Support
standard adjustable

Code 132315



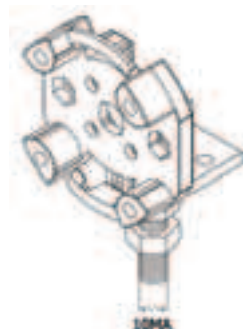
Support
reinforced

Code 132303



Support
reinforced adjustable

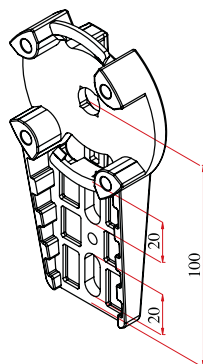
Code 132316



Supports for tubular motors series **TM45**

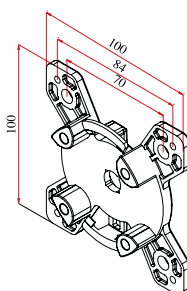
Support
adjustable

Code 132306



Support
universal 100x100

Code 132324



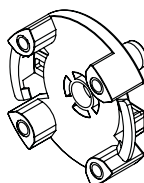
Support
universal 100x100 with steel base

Code 132323



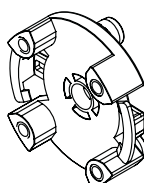
Support
for sides Rehau right

Code 132326



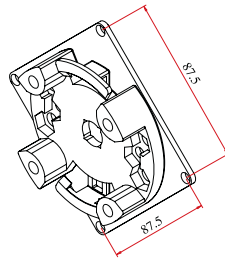
Support
for sides Rehau left

Code 132327



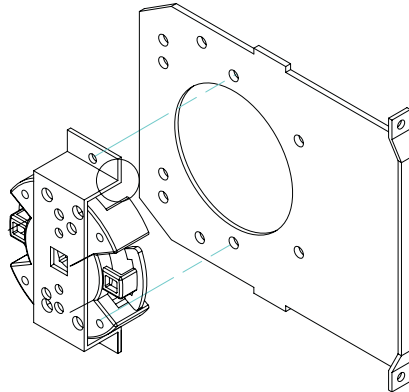
Support
for Thyssen
sides

Code 132329



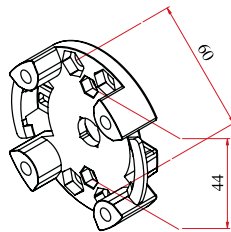
Support
for Modulo.
ZF and Plastival
sides

Code 132330



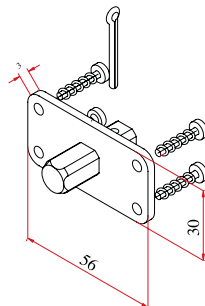
Support
for ZF brackets
between centres 44

Code 132305



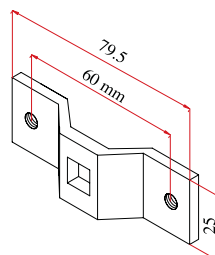
Square pin
10mm

Code 132309



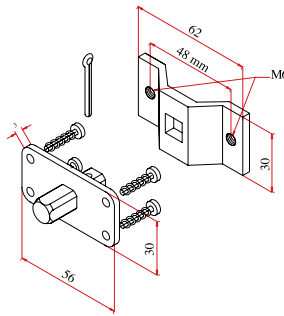
Support
bracket for
square pin 10 mm

Code 132328



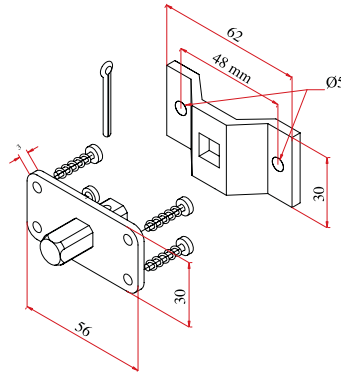
Support kit
bracket and square pin
10 mm (threaded holes)

Code 132311



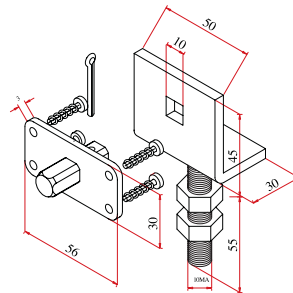
Support kit
bracket and square pin
10 mm (through holes)

Code 132307



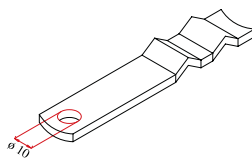
Support kit
adjustable bracket and square pin
10 mm

Code 132301



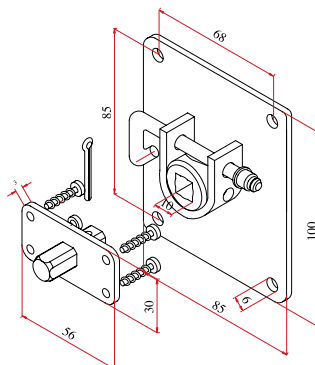
Wall anchor

Code 132314



Support kit
85x100 plate with release
and square pin 10 mm

Code 132317



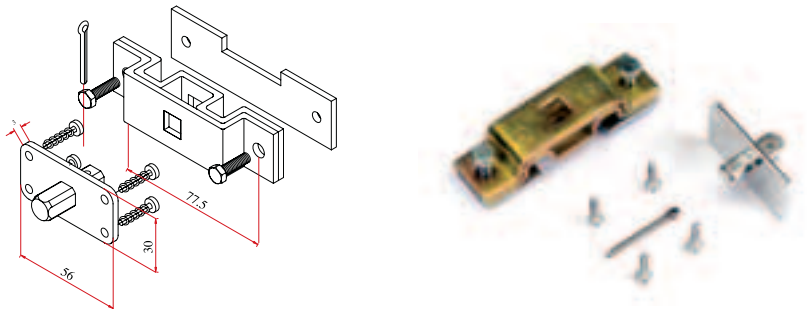
Support kit
**100 x100 plate
with release
and square pin 10 mm**

Code 132319



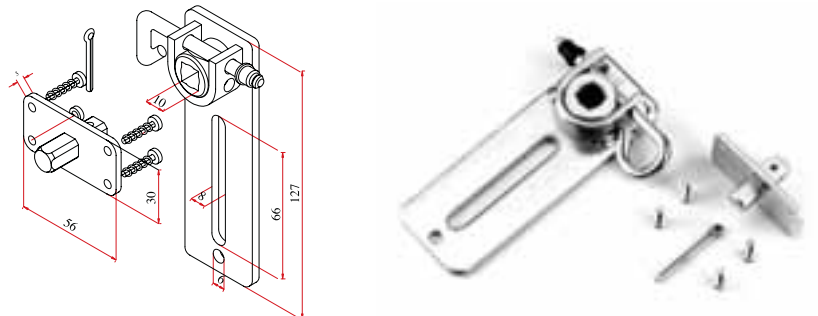
Support kit
**bracket between
centres 77.5 mm
and square pin 10 mm**

Code 132325



Support kit
**adjustable bracket
with release
and square pin**

Code 132320



Support
with 40 mm projection

Code 132322



Support
**enbloc
on motor side**

Code 132331



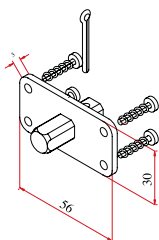
Supports for tubular motors TM 45 M (with manual override device)

To be defined according
to type of installation.



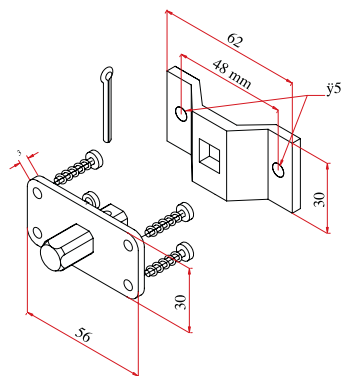
Square pin cms

Code 132310



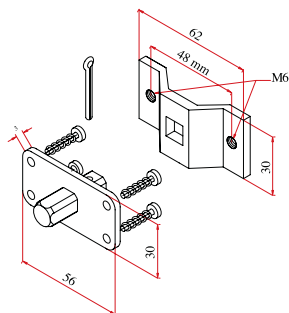
Support kit bracket and square pin cms (through holes)

Code 132308



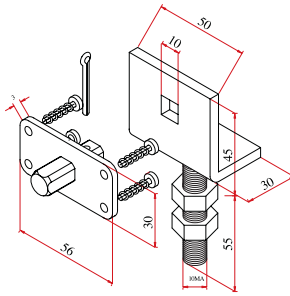
Support kit bracket and square pin cms (threaded holes)

Code 132312



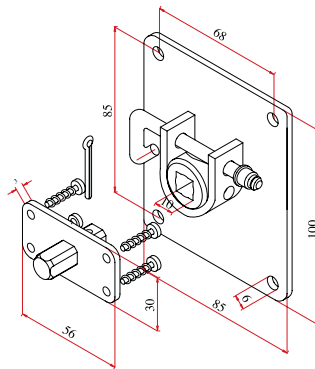
Support kit
**adjustable bracket
 and square pin cms**

Code 132313



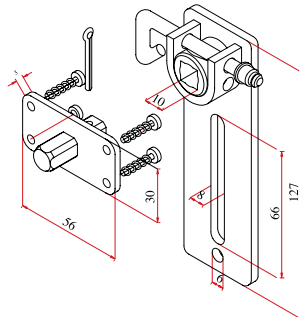
Support Kit
**85x100 plate
 and square pin cms
 with release**

Code 132318



Supporto Kit
**adjustable bracket
 and square pin cms
 with release**

Code 132321



Mechanical accessories



Device
**anti-burglary
octagonal tube 60**

Code 132206



Device
**anti-burglary
octagonal tube 70**

Code 132207



Cap
**telescopic
octagonal tube 60**

Code 132204



Cap
**telescopic
octagonal tube 70**

Code 132205



Cap support
adjustable with bearing

Code 132332